





**RESIDENTIAL SALES\***  
**MARCH 2025**  
**SUMMARY STATISTICS**

				
	Units Sold	Dollar Volume (Millions)	Active Listings	New Listings
CENTRAL OKANAGAN	344 ↑ 15.8%	\$293.7 ↑ 22.9%	3,024 ↑ 14.3%	1,185 ↓ -0.5%
NORTH OKANAGAN	121 ↑ 33.0%	\$79.3 ↑ 26.1%	845 ↑ 4.6%	355 ↑ 17.5%
SHUSWAP / REVELSTOKE	70 ↑ 9.4%	\$45.3 ↓ -2.6%	534 ↑ 0.9%	213 ↓ -13.1%
SOUTH OKANAGAN	139 ↑ 25.2%	\$88.5 ↑ 37.7%	1,273 ↑ 0.6%	451 ↑ 1.8%
SOUTH PEACE RIVER AREA	33 ↑ 43.5%	\$10.6 ↑ 56.1%	182 ↓ -8.5%	55 ↑ 31.0%
KAMLOOPS AND DISTRICT	185 ↓ -5.6%	\$103.5 ↓ -7.6%	1,140 ↑ 7.2%	476 ↑ 6.7%
KOOTENAY	251 ↑ 5.0%	\$146.2 ↑ 12.1%	1,376 ↑ 12.8%	479 ↑ 6.4%
<b>TOTAL ASSOCIATION</b>	<b>1,143</b> ↑ 11.9%	<b>\$767.1</b> ↑ 15.9%	<b>8,374</b> ↑ 8.3%	<b>3,214</b> ↑ 3.0%

\*Residential = Acreage, Duplex, Mobile Home, Recreational, SINGLE-FAMILY\*, 3/4Plex, Apartment & Townhouse. Excludes Land

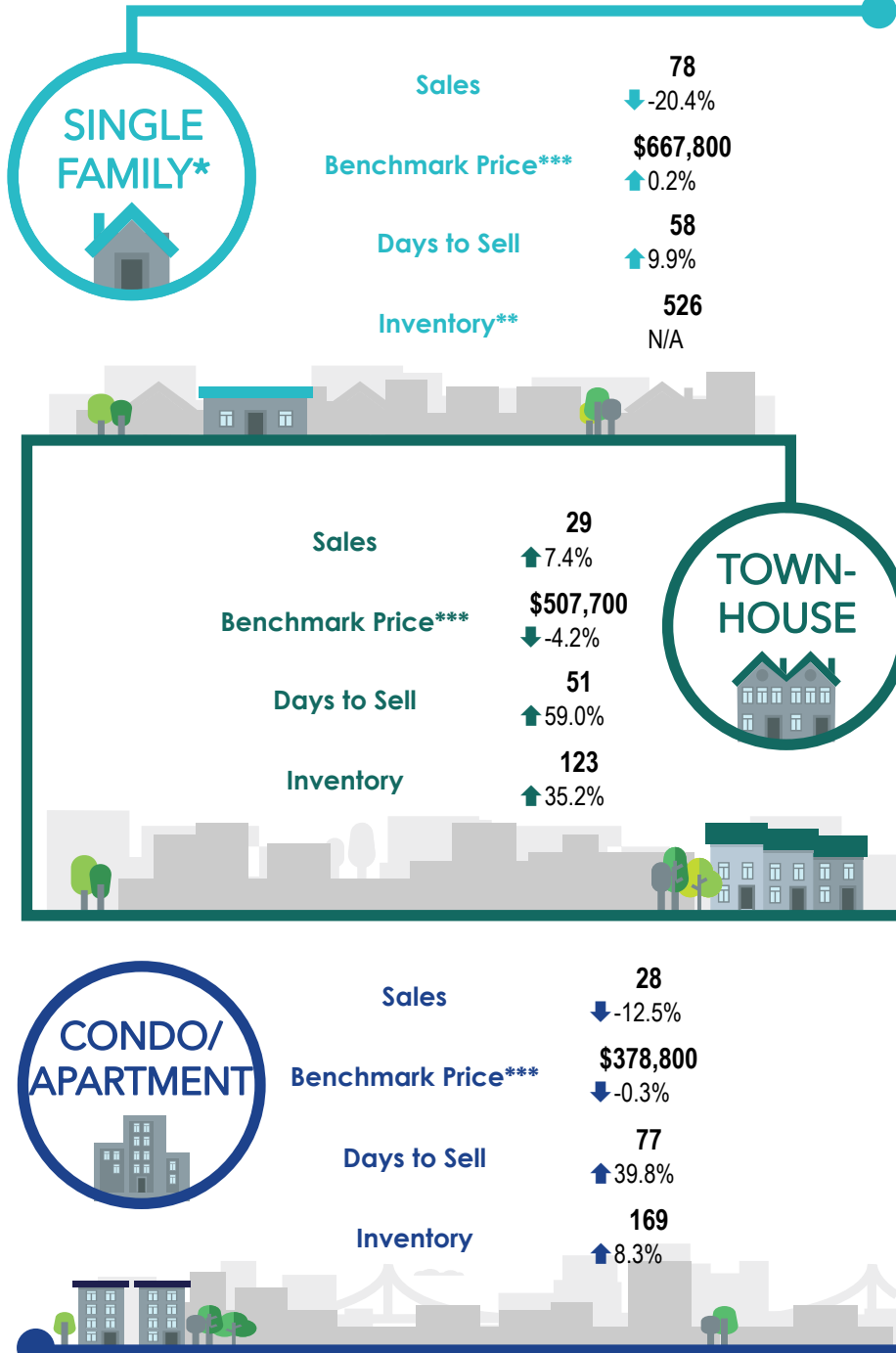
\*\*Percentage indicates change from the same period last year



This map is for informational purposes. It does not represent an on-the-ground survey and represents only the approximate relative location of property boundaries.



## KAMLOOPS AND DISTRICT REGION



\*Excludes lakefront and acreage Single-Family homes

\*\* With lakefront and acreage properties included, Single-Family home inventory was 669 in March 2025, up 0.9% from March 2024.

\*\*\*Benchmark Price: Estimated sales price of a benchmark property. Benchmarks represent a typical property within each market.

\*\*\*Percentages indicate changes from the same period last year.



## KAMLOOPS AND DISTRICT REGION

Location	SINGLE-FAMILY*		TOWNHOUSE		APARTMENT	
	Sales	Benchmark Price	Sales	Benchmark Price	Sales	Benchmark Price
Aberdeen	6 0.0%	\$884,600 ↑ 2.3%	4 ↑ 33.3%	\$558,400 ↓ -2.2%	1 ↓ -50.0%	\$347,800 ↑ 0.3%
Ashcroft	1 ↓ -66.7%	\$374,200 ↓ -0.5%	0 ↓ -100.0%		2	
Barnhartvale	3 ↓ -40.0%	\$775,400 ↑ 2.0%	0		0	
Barriere	0 ↓ -100.0%	\$516,700 ↓ -2.7%	0		0	
Batchelor Heights	1 ↓ -75.0%	\$885,500 ↓ -1.3%	0 ↓ -100.0%	\$549,600 ↓ -2.7%	0	
Brocklehurst	7 ↑ 75.0%	\$645,000 ↑ 2.3%	4 ↓ -0.9%	\$385,700	1 0.0%	\$266,200 ↑ 2.9%
Cache Creek	0	\$430,900 ↓ -1.9%	0		0	
Campbell Creek/Deloro	3	\$705,400 ↑ 3.0%	0		0	
Chase	2 ↑ 100.0%	\$511,600 ↓ -0.1%	3 ↓ -2.6%	\$495,000	0	
Cherry Creek/Savona	0	\$855,800 ↑ 1.4%	0		0	
Clearwater	2 ↑ 100.0%	\$469,400 ↓ -3.3%	0		1	
Clinton	0 ↓ -100.0%	\$335,000 ↓ -0.8%	0		0	
Dallas	2 ↓ -71.4%	\$752,500 ↑ 1.7%	0		2 ↑ 0.2%	\$359,000
Dufferin/Southgate	1 0.0%	\$830,600 ↑ 4.1%	0 ↓ -2.1%	\$684,100	0 ↑ 0.0%	\$443,300
Heffley	0 ↓ -100.0%	\$777,300 ↑ 0.5%	0		0	
Lillooet	3	\$367,600 ↓ -3.8%	0		0	
Logan Lake	4 ↓ -20.0%	\$477,500 ↓ -2.1%	0 ↓ -100.0%		2 ↑ 4.5%	\$172,900

\*Excludes lakefront and acreage Single-Family homes

\*\*Percentage indicates change from the same period last year



## KAMLOOPS AND DISTRICT REGION

Location	SINGLE-FAMILY*		TOWNHOUSE		APARTMENT	
	Sales	Benchmark Price	Sales	Benchmark Price	Sales	Benchmark Price
Merritt	6 ↓ -40.0%	\$464,000 ↓ -1.6%	1 ↓ -3.3%	\$368,700	1 ↑ 2.6%	\$287,500
North Kamloops	5 ↓ -50.0%	\$549,100 ↓ -1.4%	0		0 ↓ -100.0%	\$313,800 ↑ 2.3%
Pinantan	0 ↓ -100.0%	\$413,400 ↓ -2.0%	0		0	
Pineview Valley	0 ↓ -100.0%	\$796,000 ↑ 0.9%	1 ↓ -50.0%	\$486,600 ↓ -3.7%	1 ↑ 0.8%	\$377,600
Pritchard	0 ↓ -100.0%	\$485,900 ↑ 0.2%	0		0	
Rayleigh	0 ↓ -100.0%	\$761,000 ↑ 3.3%	0		0	
Sahali	2 ↑ 100.0%	\$795,400 ↑ 0.3%	6 ↓ -25.0%	\$395,400 ↓ -3.2%	5 ↓ -28.6%	\$452,000 ↓ -1.3%
South Kamloops	8 ↑ 14.3%	\$688,500 ↑ 1.2%	1 ↓ -50.0%	\$539,100 ↓ -4.6%	5 ↓ -44.4%	\$353,500 ↑ 1.3%
South Thompson Valley	0	\$839,600 ↑ 6.4%	0		0	
Sun Peaks	0 ↓ -100.0%	\$798,600 ↓ -2.2%	1 ↓ -50.0%	\$846,200 ↓ -2.6%	3 ↓ -57.1%	\$510,500 ↑ 6.7%
Sun Rivers	6 ↑ 20.0%	\$916,100 ↑ 1.7%	1 ↓ -3.5%	\$671,100	2 0.0%	\$350,500 ↑ 1.0%
Valleyview	4 ↑ 33.3%	\$820,600 ↑ 1.8%	0 ↓ -100.0%	\$566,900 ↓ -3.7%	1 0.0%	
Westsyde	6 0.0%	\$749,700 ↑ 0.5%	4 ↑ 300.0%	\$414,000 ↓ -1.9%	0 ↑ 0.6%	\$401,900
Juniper Ridge	4 ↓ -33.3%	\$951,300 ↑ 0.4%	3 ↑ 50.0%	\$589,100 ↓ -3.3%	1	

\*Excludes lakefront and acreage Single-Family homes

\*\*Percentage indicates change from the same period last year